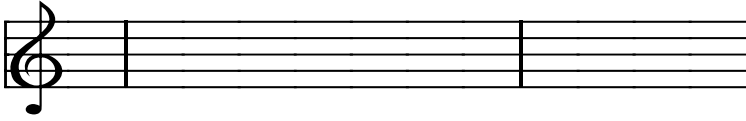


Contemporary Theory

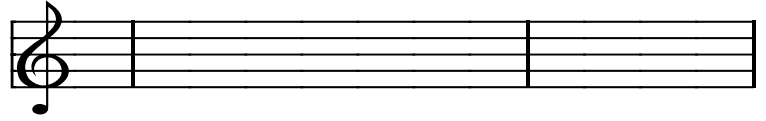
Assignment #1

1. For each triad below, list the four triads that are in a chromatic mediant relationship to it and the two that are in a doubly chromatic mediant relationship. Label each chord.

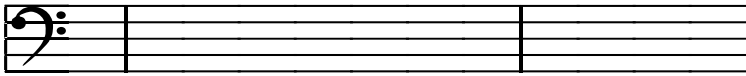
Bb major



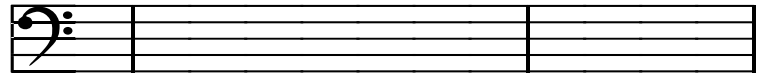
C minor



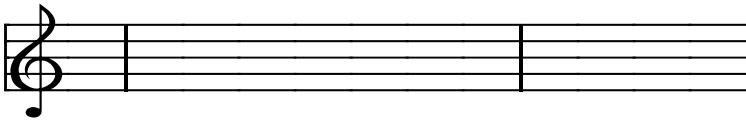
F major



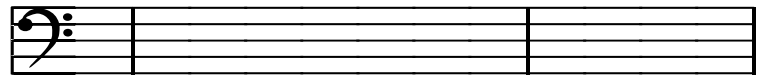
D minor



E major



C# minor



2. Continue this example, using chromatic mediants in the blanks and employing conventional voice leading:

A musical example in piano style (grand staff) showing a sequence of chords: C major, G major, C major, F major, D7, and G major. The bass line shows chromatic voice leading between the bass notes of the chords. There are four blank measures following the G major chord for the student to continue the exercise.

C G C F D7 G