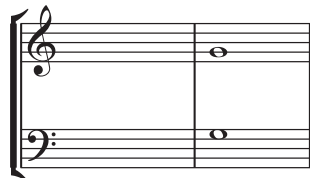


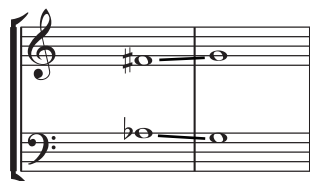
Procedure for figuring out the augmented sixth chords

1. Determine the dominant chord of whatever key you're in. You don't have to put the octave in soprano and bass.



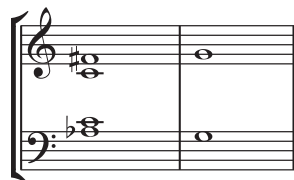
C: V

2. Add chromatic neighbor notes to each note in the dominant chord.



C: V

3. Determine what type of augmented sixth you would like.



C: It⁺6 V

a. Italian 6:

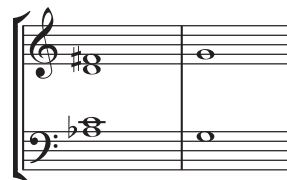
Add a third and double it.



C: Gr⁺6 V

b. German 6:

Add a third and a fifth.

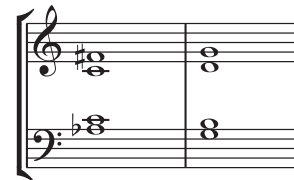


C: Fr⁺6 V

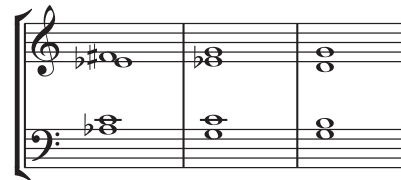
c. French 6:

Add a third and an augmented fourth. Check that all four notes are from the whole-tone collection (here, a^b - b^b - c - d - e - f[#])

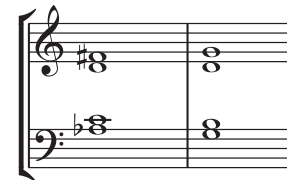
4. Complete the voice-leading.



C: It⁺6 V



C: Gr⁺6 V₄⁶ V



C: Fr⁺6 V

To avoid parallel fifths, often some other chord comes in between the German sixth and the dominant.